

Test Report

No. LPCI/11542-1/09
CTS Ref. CTS/09/2752/Electroloy

Date : 15/07/2009

Page: 1 of 5

ELECTROLOY CORPORATION SDN. BHD.
3 & 6, JALAN BAYU 7, BANDAR SRI ALAM,
81750 MASAI, JOHOR, MALAYSIA.

The following merchandise was (were) submitted and identified by the client as:

Sample Description : EM3038R-L NO CLEAN FLUX
Sample Receiving Date : 09/07/2009
Testing Period : 09/07/2009 to 15/07/2009


Test Requested : In accordance with the RoHS Directive 2002/95/EC, and its amendment directives.

Test Method : Please refer to next page(s).

Test Results : Please refer to next page(s).

Analysts : Ng Mei Kheng & Yee Sook Wai

SGS LABORATORY SERVICES (M) SDN. BHD.



CHONG KIEN LEN
B.Sc.(HONS) AMIC
LAB MANAGER

This document is issued by the Company subject to its General Conditions of Service printed overleaf, available on request or accessible at www.sgs.com/terms_and_conditions.htm and, for electronic format documents, subject to Terms and Conditions for Electronic Documents at www.sgs.com/terms_e-document.htm. Attention is drawn to the limitation of liability, indemnification and jurisdiction issues defined therein. Any holder of this document is advised that information contained hereon reflects the Company's findings at the time of its intervention only and within the limits of Client's instructions, if any. The Company's sole responsibility is to its Client and this document does not exonerate parties to a transaction from exercising all their rights and obligations under the transaction documents. This document cannot be reproduced except in full, without prior written approval of the Company. Any unauthorized alteration, forgery or falsification of the content or appearance of this document is unlawful and offenders may be prosecuted to the fullest extent of the law. Unless otherwise stated the results shown in this test report refer only to the sample(s) tested and such sample(s) are retained for three months only.

Test Report

No. LPCI/11542-1/09
 CTS Ref. CTS/09/2752/Electroloy

Date : 15/07/2009

Page: 2 of 5

Test results:

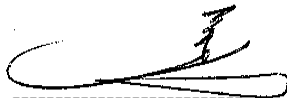
Test Part Description :

Sample Description : EM3038R-L NO CLEAN FLUX

RoHS Directive 2002/95/EC

Test Item(s):	Unit	Test Method	Results	MDL
Cadmium(Cd)	mg/kg	With reference to EPA Method 3051A, and performed by ICP-OES	N.D.	2
Lead (Pb)	mg/kg	With reference to EPA Method 3051A, and performed by ICP-OES	N.D.	2
Mercury (Hg)	mg/kg	With reference to EPA Method 3051A, and performed by ICP-OES	N.D.	2
Hexavalent Chromium (CrVI)	mg/kg	With reference to EPA Method 3060A & 7196A, and performed by UV-VIS Spectrophotometry	N.D.	2
Sum of PBBs	mg/kg	With reference to EPA Method 3540C/3550B, and performed by GC-MS	N.D.	-
Monobromobiphenyl	mg/kg	With reference to EPA Method 3540C/3550B, and performed by GC-MS	N.D.	5
Dibromobiphenyl	mg/kg	With reference to EPA Method 3540C/3550B, and performed by GC-MS	N.D.	5
Tribromobiphenyl	mg/kg	With reference to EPA Method 3540C/3550B, and performed by GC-MS	N.D.	5
Tetrabromobiphenyl	mg/kg	With reference to EPA Method 3540C/3550B, and performed by GC-MS	N.D.	5
Hexabromobiphenyl	mg/kg	With reference to EPA Method 3540C/3550B, and performed by GC-MS	N.D.	5
Pentabromobiphenyl	mg/kg	With reference to EPA Method 3540C/3550B, and performed by GC-MS	N.D.	5
Heptabromobiphenyl	mg/kg	With reference to EPA Method 3540C/3550B, and performed by GC-MS	N.D.	5
Octabromobiphenyl	mg/kg	With reference to EPA Method 3540C/3550B, and performed by GC-MS	N.D.	5
Nonabromobiphenyl	mg/kg	With reference to EPA Method 3540C/3550B, and performed by GC-MS	N.D.	5
Decabromobiphenyl	mg/kg	With reference to EPA Method 3540C/3550B, and performed by GC-MS	N.D.	5

SGS LABORATORY SERVICES (M) SDN. BHD.




CHONG KIEN LEN
 B.Sc.(HONS) AMIC
 LAB MANAGER

This document is issued by the Company subject to its General Conditions of Service printed overleaf, available on request or accessible at www.sgs.com/terms_and_conditions.htm and, for electronic format documents, subject to Terms and Conditions for Electronic Documents at www.sgs.com/terms_e-document.htm. Attention is drawn to the limitation of liability, indemnification and jurisdiction issues defined therein. Any holder of this document is advised that information contained hereon reflects the Company's findings at the time of its intervention only and within the limits of Client's instructions, if any. The Company's sole responsibility is to its Client and this document does not exonerate parties to a transaction from exercising all their rights and obligations under the transaction documents. This document cannot be reproduced except in full, without prior written approval of the Company. Any unauthorized alteration, forgery or falsification of the content or appearance of this document is unlawful and offenders may be prosecuted to the fullest extent of the law. Unless otherwise stated the results shown in this test report refer only to the sample(s) tested and such sample(s) are retained for three months only.

Test Item(s):	Unit	Test Method	Results	MDL
Sum of PBDEs	mg/kg	With reference to EPA Method 3540C/3550B, and performed by GC-MS	N.D.	-
Monobromodiphenyl ether	mg/kg	With reference to EPA Method 3540C/3550B, and performed by GC-MS	N.D.	5
Dibromodiphenyl ether	mg/kg	With reference to EPA Method 3540C/3550B, and performed by GC-MS	N.D.	5
Tribromodiphenyl ether	mg/kg	With reference to EPA Method 3540C/3550B, and performed by GC-MS	N.D.	5
Tetrabromodiphenyl ether	mg/kg	With reference to EPA Method 3540C/3550B, and performed by GC-MS	N.D.	5
Pentabromodiphenyl ether	mg/kg	With reference to EPA Method 3540C/3550B, and performed by GC-MS	N.D.	5
Hexabromodiphenyl ether	mg/kg	With reference to EPA Method 3540C/3550B, and performed by GC-MS	N.D.	5
Heptabromodiphenyl ether	mg/kg	With reference to EPA Method 3540C/3550B, and performed by GC-MS	N.D.	5
Octabromodiphenyl ether	mg/kg	With reference to EPA Method 3540C/3550B, and performed by GC-MS	N.D.	5
Nonabromodiphenyl ether	mg/kg	With reference to EPA Method 3540C/3550B, and performed by GC-MS	N.D.	5
Decabromodiphenyl ether ##	mg/kg	With reference to EPA Method 3540C/3550B, and performed by GC-MS	N.D.	5

- Note :
- (a) mg/kg = ppm ; (0.1wt% = 1000ppm)
 - (b) N.D. = Not Detected
 - (c) MDL = Method Detection Limit
 - (d) ## = The exemption of DecaBDE in polymeric application according 2005/717/EC was overruled by the European Court of Justice by its decision of 01.04.2008. Subsequently DecaBDE is included in the sum of PBDE after 01.07.2008
 - (e) - = Not regulated
 - (f) Testing based on original basis

SGS LABORATORY SERVICES (M) SDN. BHD.



CHONG KIEN LEN
B.Sc.(HONS) AMIC
LAB MANAGER

This document is issued by the Company subject to its General Conditions of Service printed overleaf, available on request or accessible at www.sgs.com/terms_and_conditions.htm and, for electronic format documents, subject to Terms and Conditions for Electronic Documents at www.sgs.com/terms_e-document.htm. Attention is drawn to the limitation of liability, indemnification and jurisdiction issues defined therein. Any holder of this document is advised that information contained hereon reflects the Company's findings at the time of its intervention only and within the limits of Client's instructions, if any. The Company's sole responsibility is to its Client and this document does not exonerate parties to a transaction from exercising all their rights and obligations under the transaction documents. This document cannot be reproduced except in full, without prior written approval of the Company. Any unauthorized alteration, forgery or falsification of the content or appearance of this document is unlawful and offenders may be prosecuted to the fullest extent of the law. Unless otherwise stated the results shown in this test report refer only to the sample(s) tested and such sample(s) are retained for three months only.

Test Report

No. LPCI/11542-1/09
CTS Ref. CTS/09/2752/Electroloy

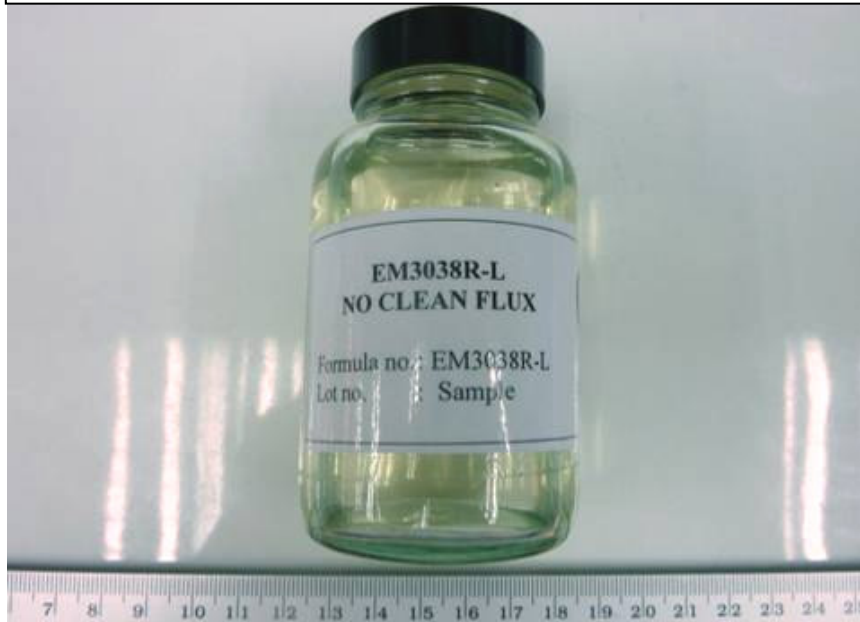
Date : 15/07/2009

Page: 4 of 5

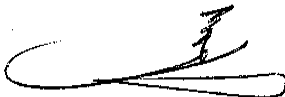
Test Part Description :

Sample Description : EM3038R-L NO CLEAN FLUX

ELECTROLOY CORPORATION SDN. BHD.
LPCI/11542-109



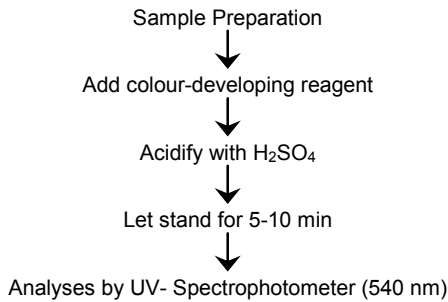
SGS LABORATORY SERVICES (M) SDN. BHD.



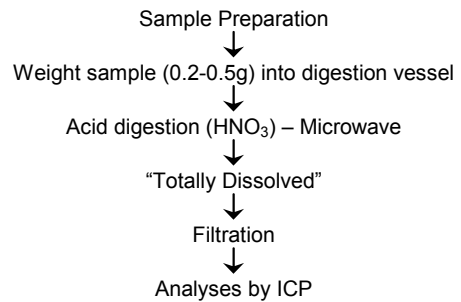
CHONG KIEN LEN
B.Sc.(HONS) AMIC
LAB MANAGER

This document is issued by the Company subject to its General Conditions of Service printed overleaf, available on request or accessible at www.sgs.com/terms_and_conditions.htm and, for electronic format documents, subject to Terms and Conditions for Electronic Documents at www.sgs.com/terms_e-document.htm. Attention is drawn to the limitation of liability, indemnification and jurisdiction issues defined therein. Any holder of this document is advised that information contained hereon reflects the Company's findings at the time of its intervention only and within the limits of Client's instructions, if any. The Company's sole responsibility is to its Client and this document does not exonerate parties to a transaction from exercising all their rights and obligations under the transaction documents. This document cannot be reproduced except in full, without prior written approval of the Company. Any unauthorized alteration, forgery or falsification of the content or appearance of this document is unlawful and offenders may be prosecuted to the fullest extent of the law. Unless otherwise stated the results shown in this test report refer only to the sample(s) tested and such sample(s) are retained for three months only.

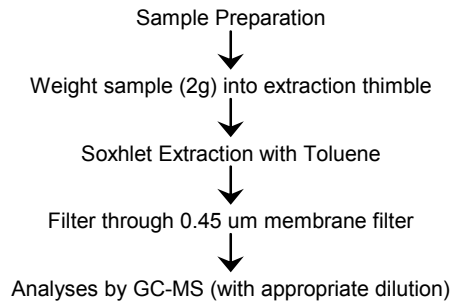
1. DETERMINATION OF HEXAVALENT CHROMIUM BY METHOD US EPA 3060A/7196A



2. MICROWAVE ASSISTED ACID DIGESTION OF ORGANICALLY BASED METRICES (US EPA 3051A)

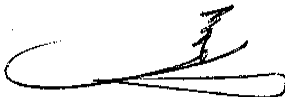


3. DETERMINATION OF PBB/PBDE WITH GC-MS



**** End of Report ****

SGS LABORATORY SERVICES (M) SDN. BHD.



CHONG KIEN LEN
 B.Sc.(HONS) AMIC
 LAB MANAGER

This document is issued by the Company subject to its General Conditions of Service printed overleaf, available on request or accessible at www.sgs.com/terms_and_conditions.htm and, for electronic format documents, subject to Terms and Conditions for Electronic Documents at www.sgs.com/terms_e-document.htm. Attention is drawn to the limitation of liability, indemnification and jurisdiction issues defined therein. Any holder of this document is advised that information contained hereon reflects the Company's findings at the time of its intervention only and within the limits of Client's instructions, if any. The Company's sole responsibility is to its Client and this document does not exonerate parties to a transaction from exercising all their rights and obligations under the transaction documents. This document cannot be reproduced except in full, without prior written approval of the Company. Any unauthorized alteration, forgery or falsification of the content or appearance of this document is unlawful and offenders may be prosecuted to the fullest extent of the law. Unless otherwise stated the results shown in this test report refer only to the sample(s) tested and such sample(s) are retained for three months only.