

## 测试报告

No. CANEC1100137506

日期: 2011年01月18日 第1页,共5页

雅拓莱金属制品(深圳)有限公司  
中国深圳市宝安区民治街道简上居民小组工业区第二栋

以下测试之样品是由申请者所提供及确认:  
纯锡焊料Sn99.9

SGS工作编号 : 12936034 - SZ  
测试样品信息 : 纯锡焊料 Sn99.9  
客户参考信息 : 锡线、锡条、锡球、锡扣、阳极棒  
SGS内部编号 : 20.6  
样品接收日期 : 2011年01月12日  
测试周期 : 2011年01月12日 - 2011年01月18日

测试要求 : 根据客户要求测试  
测试方法 : 请参见下一页  
测试结果 : 请参见下一页  
结论 : 基于所送样品进行的测试, 测试结果与欧盟RoHS指令2002/95/EC以及后续修正指令的要求**相符**。

通标标准技术服务有限公司  
授权签名



Silva Zhou周北林  
批准签署人

This document is issued by the Company subject to its General Conditions of Service printed overleaf, available on request or accessible at [http://www.sgs.com/terms\\_and\\_conditions.htm](http://www.sgs.com/terms_and_conditions.htm) and, for electronic format documents, subject to Terms and Conditions for Electronic Documents at [www.sgs.com/terms\\_e-document.htm](http://www.sgs.com/terms_e-document.htm). Attention is drawn to the limitation of liability, indemnification and jurisdiction issues defined therein. Any holder of this document is advised that information contained hereon reflects the Company's findings at the time of its preparation only and within the limits of Client's instructions, if any. The Company's sole responsibility is to its Client and this document does not exonerate parties to a transaction from exercising all their rights and obligations under the transaction documents. This document cannot be reproduced except in full, without prior written approval of the Company. Any unauthorized alteration, forgery or falsification of the content or appearance of this document is unlawful and offenders may be prosecuted to the fullest extent of the law. Unless otherwise stated, the results shown in this test report refer only to the sample(s) tested.

## 测试报告

No. CANEC1100137506

日期: 2011年01月18日 第2页,共5页

### 测试结果:

样品1 ID : CAN11-001375.003  
 样品1描述 : 银色金属

### RoHS 指令 2002/95/EC

测试项目	单位	测试方法 (参考)	测试结果	MDL	限值
镉 (Cd)	mg/kg	IEC 62321:2008, ICP-OES	N.D.	2	100
铅 (Pb)	mg/kg	IEC 62321:2008, ICP-OES	112	2	1000
汞 (Hg)	mg/kg	IEC 62321:2008, ICP-OES	N.D.	2	1000
沸水萃取法测六价铬 (CrVI)	-	IEC 62321:2008, UV-Vis	Negative	◇	#
多溴联苯(PBBs)之和	mg/kg	-	N.D.	-	1000
单溴联苯	mg/kg	IEC 62321:2008, GC-MS	N.D.	5	
二溴联苯	mg/kg	IEC 62321:2008, GC-MS	N.D.	5	
三溴联苯	mg/kg	IEC 62321:2008, GC-MS	N.D.	5	
四溴联苯	mg/kg	IEC 62321:2008, GC-MS	N.D.	5	
五溴联苯	mg/kg	IEC 62321:2008, GC-MS	N.D.	5	
六溴联苯	mg/kg	IEC 62321:2008, GC-MS	N.D.	5	
七溴联苯	mg/kg	IEC 62321:2008, GC-MS	N.D.	5	
八溴联苯	mg/kg	IEC 62321:2008, GC-MS	N.D.	5	
九溴联苯	mg/kg	IEC 62321:2008, GC-MS	N.D.	5	
十溴联苯	mg/kg	IEC 62321:2008, GC-MS	N.D.	5	
多溴二苯醚(PBDEs)之和	mg/kg	-	N.D.	-	1000
单溴二苯醚	mg/kg	IEC 62321:2008, GC-MS	N.D.	5	
二溴二苯醚	mg/kg	IEC 62321:2008, GC-MS	N.D.	5	
三溴二苯醚	mg/kg	IEC 62321:2008, GC-MS	N.D.	5	
四溴二苯醚	mg/kg	IEC 62321:2008, GC-MS	N.D.	5	
五溴二苯醚	mg/kg	IEC 62321:2008, GC-MS	N.D.	5	
六溴二苯醚	mg/kg	IEC 62321:2008, GC-MS	N.D.	5	
七溴二苯醚	mg/kg	IEC 62321:2008, GC-MS	N.D.	5	
八溴二苯醚	mg/kg	IEC 62321:2008, GC-MS	N.D.	5	
九溴二苯醚	mg/kg	IEC 62321:2008, GC-MS	N.D.	5	
十溴二苯醚	mg/kg	IEC 62321:2008, GC-MS	N.D.	5	

This document is issued by the Company subject to its General Conditions of Service printed overleaf, available on request or accessible at [http://www.sgs.com/terms\\_and\\_conditions.htm](http://www.sgs.com/terms_and_conditions.htm) and, for electronic format documents, subject to Terms and Conditions for Electronic Documents at [www.sgs.com/terms\\_e-document.htm](http://www.sgs.com/terms_e-document.htm). Attention is drawn to the limitation of liability, indemnification and jurisdiction issues defined therein. Any holder of this document is advised that information contained hereon reflects the Company's findings at the time of its preparation only and within the limits of Client's instructions, if any. The Company's sole responsibility is to its Client and this document does not exonerate parties to a transaction from exercising all their rights and obligations under the transaction documents. This document cannot be reproduced except in full, without prior written approval of the Company. Any unauthorized alteration, forgery or falsification of the content or appearance of this document is unlawful and offenders may be prosecuted to the fullest extent of the law. Unless otherwise stated, the results shown in this test report refer only to the sample(s) tested.

### 注释:

1. mg/kg = ppm
2. N.D. = 未检出 (< MDL)
3. MDL = 方法检测限
4. ◇ = 点测试:

Negative = 未检测到六价铬, Positive = 检测到;

(如果点测试结果为Negative或不能确认, 测试样品需进一步由沸水萃取法进行测试。)

沸水萃取法:

Negative = 未检测到六价铬

Positive = 检测到六价铬;

每50cm<sup>2</sup>面积的被测试样品的沸水萃取液中六价铬的浓度等于或大于0.02mg/kg。

由于未获知样品的存储条件和生产日期, 样品的六价铬测试结果仅能代表测试时样品含六价铬的状态。

5. # = Positive = 阳性

Negative = 阴性

6. "-" = 未规定

7. 多溴二苯醚 = 多溴联苯醚

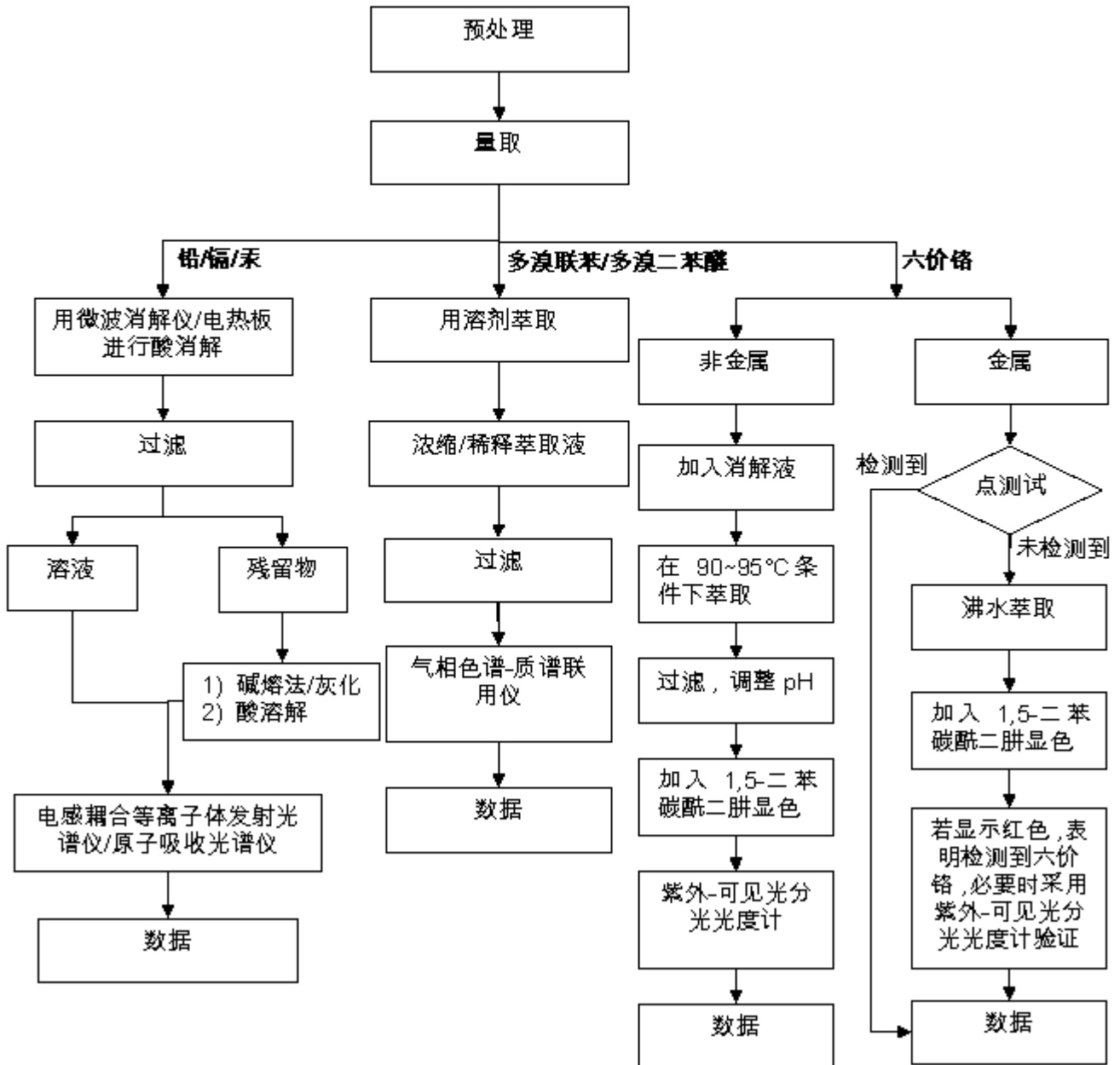
备注:本测试报告内容是参照报告编号为CANEC1100137505的中文译本, 中英文版本如有歧异, 概以英文版为准。

This document is issued by the Company subject to its General Conditions of Service printed overleaf, available on request or accessible at [http://www.sgs.com/terms\\_and\\_conditions.htm](http://www.sgs.com/terms_and_conditions.htm) and, for electronic format documents, subject to Terms and Conditions for Electronic Documents at [www.sgs.com/terms\\_e-document.htm](http://www.sgs.com/terms_e-document.htm). Attention is drawn to the limitation of liability, indemnification and jurisdiction issues defined therein. Any holder of this document is advised that information contained hereon reflects the Company's findings at the time of its interpretation only and within the limits of Client's instructions, if any. The Company's sole responsibility is to its Client and this document does not exonerate parties to a transaction from exercising all their rights and obligations under the transaction documents. This document cannot be reproduced except in full, without prior written approval of the Company. Any unauthorized alteration, forgery or falsification of the content or appearance of this document is unlawful and offenders may be prosecuted to the fullest extent of the law. Unless otherwise stated, the results shown in this test report refer only to the sample(s) tested.

附件

RoHS 测试流程图

- 1) 分析人员: 汪丹 / 余晓璐 / 詹达琦
- 2) 项目负责人: 余奕东 / 杨伟兴
- 3) 样品按照下述流程被完全消解 (六价铬和多溴联苯/多溴二苯醚测试除外)



This document is issued by the Company subject to its General Conditions of Service printed overleaf, available on request or accessible at [http://www.sgs.com/terms\\_and\\_conditions.htm](http://www.sgs.com/terms_and_conditions.htm) and, for electronic format documents, subject to Terms and Conditions for Electronic Documents at [www.sgs.com/terms\\_e-document.htm](http://www.sgs.com/terms_e-document.htm). Attention is drawn to the limitation of liability, indemnification and jurisdiction issues defined therein. Any holder of this document is advised that information contained hereon reflects the Company's findings at the time of its preparation only and within the limits of Client's instructions, if any. The Company's sole responsibility is to its Client and this document does not exonerate parties to a transaction from exercising all their rights and obligations under the transaction documents. This document cannot be reproduced except in full, without prior written approval of the Company. Any unauthorized alteration, forgery or falsification of the content or appearance of this document is unlawful and offenders may be prosecuted to the fullest extent of the law. Unless otherwise stated, the results shown in this test report refer only to the sample(s) tested.

样品照片:



此照片仅限于随SGS正本报告使用  
\*\*\* 报告完 \*\*\*

This document is issued by the Company subject to its General Conditions of Service printed overleaf, available on request or accessible at [http://www.sgs.com/terms\\_and\\_conditions.htm](http://www.sgs.com/terms_and_conditions.htm) and, for electronic format documents, subject to Terms and Conditions for Electronic Documents at [www.sgs.com/terms\\_e-document.htm](http://www.sgs.com/terms_e-document.htm). Attention is drawn to the limitation of liability, indemnification and jurisdiction issues defined therein. Any holder of this document is advised that information contained hereon reflects the Company's findings at the time of its preparation only and within the limits of Client's instructions, if any. The Company's sole responsibility is to its Client and this document does not exonerate parties to a transaction from exercising all their rights and obligations under the transaction documents. This document cannot be reproduced except in full, without prior written approval of the Company. Any unauthorized alteration, forgery or falsification of the content or appearance of this document is unlawful and offenders may be prosecuted to the fullest extent of the law. Unless otherwise stated, the results shown in this test report refer only to the sample(s) tested.